

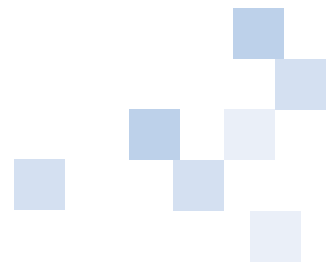


Multi-function

Simplified programming

Quick connection,
mounting without tools

48 x 96 mm format



Programmable Digital Panel Meters

μDIGI 2 Range



μDIGI 2-E

DC voltage

(600 V, 200 V, 20 V)

DC current

(5 A, 1 A, 100 mV, 60 mV)

AC voltage

(600 V, 200 V, 20 V)

AC current

(5 A, 1 A, 100 mV, 60 mV)



μDIGI 2-P

Process

(± 20 mA, 10 V, 200 V, tachometer dynamo)

Temperature

(J, K, T and N thermocouples, Pt100, Pt1000)

Potentiometer

(100 Ω to 100 kΩ)

Resistance

(1 kΩ, 10 kΩ and 50 kΩ ranges)

■ General specifications

Power supply	
Voltage	20 – 265 Vac 50/60 Hz 11 – 265 Vdc
Consumption	3 W
Accuracy	
Temperature coefficient	100 ppm/°C
Temperature coefficient (Aac)	200 ppm/°C (μdigi 2-E)
Heating-up time	5 min
Temperature for specified accuracy	23 °C ± 5 °C
Display	
Range	- 9 999 à + 9 999
Display	Red LED, H = 14 mm
Decimal point	Programmable
Rate	20 measurements / second
Overruns	-OvE/OvE display
Probe breakage	OvE (μdigi 2-P)
Environment	
Operating temperature	-10 °C to +60 °C
Storage temperature	-25 °C to +85 °C
Relative humidity	< 95 % to +40 °C
Maximum altitude	2,000 m
Mechanical specifications	
Material	Polycarbonate as per UL 94 V-0
Weight	150 g
Protection	IP65 on front panel
Mounting	On panel with self-locking strap
Format	L x W x D: 96 x 48 x 60 mm
Panel cut-out	92 x 45 mm
Sensor excitation	
μdigi 2-P	24 Vdc - 30 mA

■ Available option

Relay output board	
Output	2 relays
Maximum voltage	400 Vac / 125 Vdc
Maximum current	8 A at 250 Vac / 24 Vdc

■ To order

Relay output board	
μDIGI 2-E	P01330081
μDIGI 2-P	P01330080
Relay output option	P01319301

- Multi-function
- Memorized MIN/MAX values
- Wide dynamic-range power supply
- 2-relay alarm output board option
- Programming on front panel



C.A 2150 Range



C.A 2150-E



C.A 2150-M



C.A 2150-D

DC voltage

(600 V, 200 V, 20 V, 2 V)

DC current

(5 A, 1 A, 100 mV, 60 mV, 50 mV, 200 mA)

AC voltage

(600 V, 200 V, 20 V, 2 V)

AC current

(5 A, 1 A, 100 mV, 60 mV, 50 mV, 200 mA)

Process

(± 20 mA, 10 V, 200 V)

Temperature

(J, K, T and N thermocouples, Pt100)

Potentiometer

(200 Ω to 100 kΩ)

Load cells

(± 15 mV, ± 30 mV, ± 150 mV)

Frequency meter

Tachometer

Meter

Chronometer

(10 to 300 Vac, magnetic sensor, Namur, NPN/PNP, TTL/24Vdc encoder, dry contact)

General specifications

Power supply		
Universal	20 – 265 Vac 50/60 Hz 10 – 300 Vdc	
Low voltage	10,5 – 70 Vdc / 22 – 53 Vac	
Consumption	5 W without options, 8 W max	
Accuracy		
Temperature coefficient	100 ppm/°C 50 ppm/°C (C.A 2150-D)	
Heating-up time	15 min 5 min (C.A 2150-D)	
Display		
Range	C.A 2150-E C.A 2150-M C.A 2150-D	± 19 999 ± 19 999 Meter : ± 99 999 Chronometer: 0 to 999.9 Freq/Tach.: 0 to 99 999
Screen	LED with programmable colour (red, green, amber), H = 14 mm	
Decimal point	Programmable	
Overrun	OvEr / -OvEr display	
Environment		
Operating temperature	-10°C to +60°C	
Storage temperature	-25°C to +80°C	
Relative humidity	< 95 % to +40°C	
Maximum altitude	2,000 m	
Mechanical specifications		
Material	Polycarbonate as per UL 94 V-0	
Weight	160 g (135 g for C.A 2150-E)	
Protection	IP65 on front panel	
Mounting	On panel with self-locking strap	
Format	L x W x D: 96 x 48 x 60 mm	
Panel cut-out	92 x 45 mm	

Sensor excitation		
	C.A 2150-M	C.A 2150-D
24 Vdc	60 mA process	30 mA
10 Vdc / 5 Vdc	60 mA	
8 Vdc		30 mA
< 1 mAdc	Pt100	



Multi-function

3 assignable display colours

3 inputs with logic functions

3 output boards available as options

Total or partial locking of programming

Programming on front panel or via software

4 alarm thresholds

Memorized MIN/MAX values

Linearization of input signal over 10 segments

Communicating

Eco function on C.A 2150-E

Available options

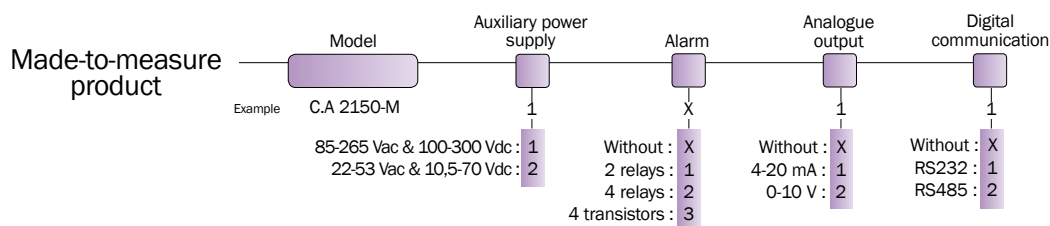
	Alarm boards		
	Board with 2 alarms on relays	Board with 4 alarms on relays	Board with 4 alarms on NPNs
Output	2 relays, 1 CO	4 relays, 1 NO	4 NPN optical couplers
Max. voltage	250 Vac or 12 Vdc	250 Vac or 50 Vdc	50 Vdc
Max. current	8 A at 250 Vac or 8 A at 24 Vdc	500 mA at 125 Vac or 1 A at 30 Vdc	50 mA at 50 Vdc

Communication boards	
Link type	RS232C RS485
Protocol	ISO 1745, C.A or ModBus/RTU protocol
Baud rate	1,200 - 2,400 - 4,800 - 9,600 or 19,200 bauds
Output connector	Rj9-4 Rj11-6 with double adapter (in + out)

Analogue output board		
Output signal	0... 10 V	4... 20 mA
Accuracy	0,1 % ± 1 digit	
Temp. coeff.	0,2 mV per K	0,5 µA per K
Max load	> 500 Ω	< 800 Ω

To order

Digital panel meters			
Power supply	C.A 2150-E	C.A 2150-M	C.A 2150-D
85 – 265 Vac / 100 – 300 Vdc	P01308005	P01308001	P01308003
22 – 53 Vac / 10 – 70 Vdc	P01308005	P01308002	P01308004



Option boards	
Model	Reference
C.A 2XXX AL board, 2 relays	P01319301
C.A 2XXX AL board, 4 relays	P01319303
C.A 2XXX AL board, 4 NPNs	P01319304
C.A 2XXX RS232 COM board	P01319306
C.A 2XXX RS485 COM board	P01319307
C.A 2150 board, 0 - 10 V output	P01319310

Mounting accessories	
Model	Reference
Multi-position mounting with 2 DIN-rail adapters	P01319401
Connector + 1 m RS232 cable	P01319403
Connector + 1 m RS485 cable	P01319404

Related products

Transformers & Shunts



Tachometric sensors



Thermocouples & Probes



FRANCE
Enerdis
16, rue Georges Besse - Silic 44
92182 ANTONY Cedex
Tél : +33 1 75 60 10 30
Fax : +33 1 46 66 62 54
info@enerdis.fr
www.enerdis.fr

UNITED KINGDOM
Chauvin Arnoux Ltd
Nelson Ct, Flagship Sq, Shaw Cross Business Pk
Dewsbury, West Yorkshire - WF12 7TH
Tel: +44 1924 460 494
Fax: +44 1924 455 328
info@chauvin-arnoux.co.uk
www.chauvin-arnoux.com

MIDDLE EAST
Chauvin Arnoux Middle East
P.O. BOX 60-154
1241 2020 JAL EL DIB - LEBANON
Tel: +961 1 890 425
Fax: +961 1 890 424
camie@chauvin-arnoux.com
www.chauvin-arnoux.com

