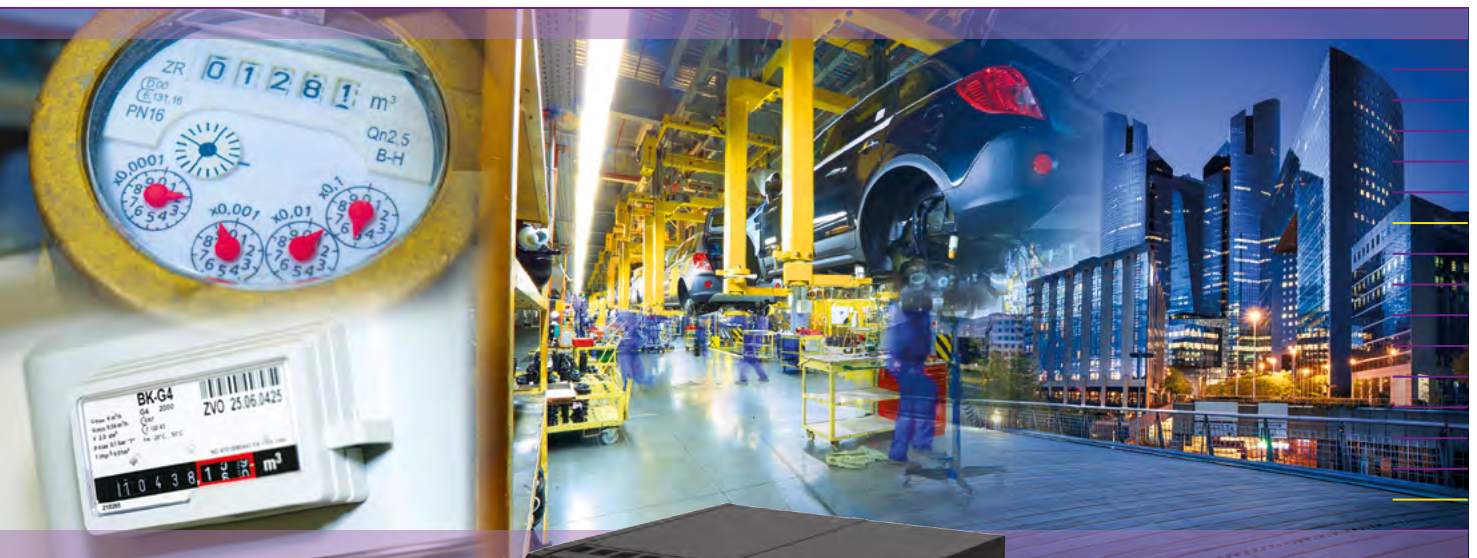


RADIO FREQUENCY SOLUTION FOR ENERGY EFFICIENCY



Wireless remote data retrieval from meters and sensors

- Quick implementation
- Centralization of remote meter data
- Very long range transmission
- Battery life of more than 10 years



Advantages of the Radio Frequency solution

- Economical long-distance data retrieval from remote and isolated meters.
- No technical modification of the existing infrastructure.
- Comprehensive solution covering everything from remote data retrieval through to the data analysis application.
- Quick implementation and easy programming

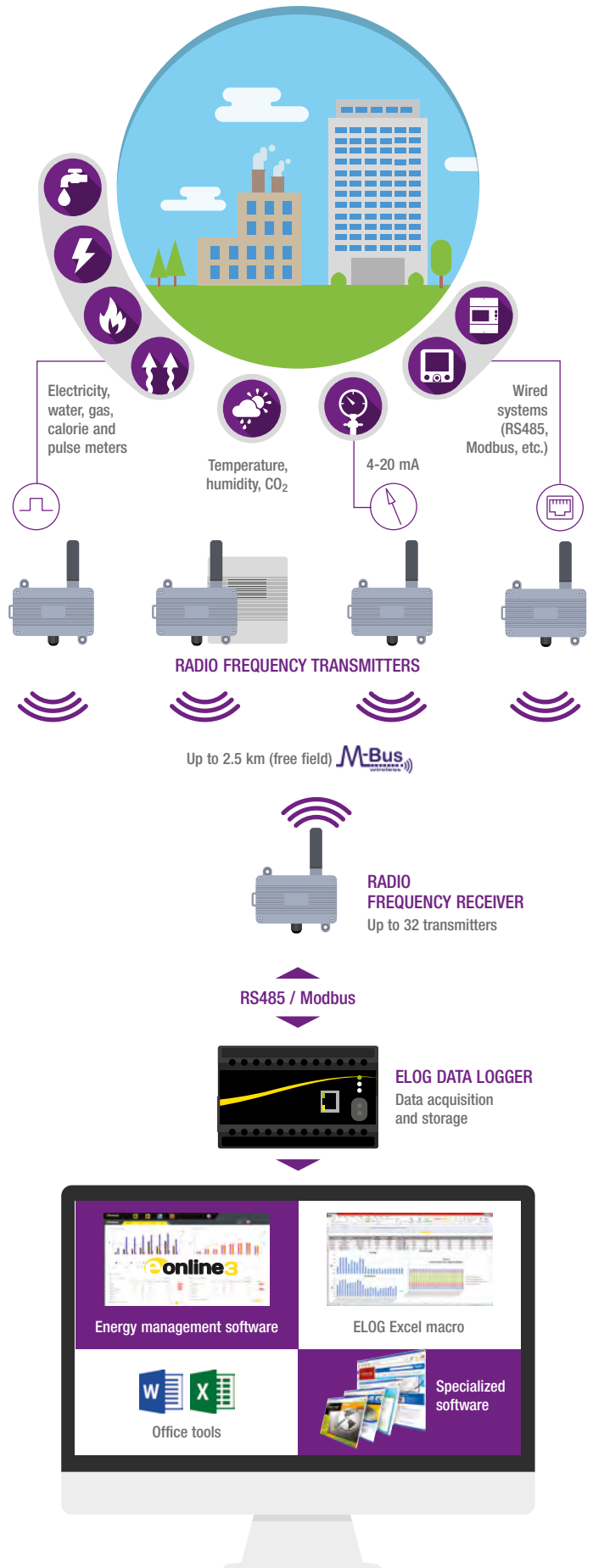


	RF TRANSMITTERS	RF MODBUS TRANSMITTERS	RF REPEATERS	RF RECEIVER
Protocol	Wireless M-Bus (WM-Bus) – EN13757-4 2011 – 169 MHz			
Transmission power	500 mW (27 dBm)	500 mW (27 dBm)		-
	100 mW (27 dBm)*			
Transmission	adjustable from 1 to 250 minutes		-	-
Range	2.5 km in free field			
Alimentation	Interchangeable battery (3.6 V Lithium battery)		7.5 – 24 Vdc	
Battery life	10 years (broadcast every 10 minutes)	-	-	-
Ingress protection	IP65 - IP40*	IP40	IP60	
Management	-	-	-	Up to 32 transmitters
Output	-	-	-	RS485 ModBus
Configuration	-	-	-	Via port USB
ABS casing	L 118 x H 79 x W 43 mm	L 118 x H 79 x W 43 mm		
	L 99 x H 85 x W 32 mm*			
Mounting	Wall-mount and DIN rail	Wall-mount and DIN rail		
	Wall-mount only*			
Operating temperature	-20 °C to +55 °C			

*For references P01330410 and P01330411

To order

Model	Reference
169 MHz RF transmitter - Ambient temperature	P01330410
169 MHz RF transmitter - Ambient temperature and humidity	P01330411
169 MHz RF transmitter - Integrated temperature	P01330412
169 MHz RF transmitter - Temperature by surface sensor	P01330413
169 MHz RF transmitter - 2 metering pulse inputs	P01330414
169 MHz RF transmitter - 2 ATEX metering pulse inputs	P01330415
169 MHz RF transmitter - CO ₂ - Ambient temperature and humidity	P01330416
169 MHz RF transmitter - 4 - 20 mA / 0 - 5 V / 0 - 10 V analogue input	P01330417
169 MHz RF transmitter - Transmission of ON-OFF status	P01330418
169 MHz RF transmitter - ModBus RS485	P01330419
169 MHz RF repeater supplied with screw-on antenna	P01330420
DIN rail for 169 MHz RF repeater	P01330421
169 MHz RF receiver - ModBus RS485 Output - Antenna not supplied	P01330422
169 MHz antenna for screwing on receiver	P01330423
169 MHz long-range antenna with cable 5 m	P01330424
10 m extension for 169 MHz long-range antenna	P01330425
DIN rail for 169 MHz RF receiver	P01330426
230 Vac - 12 Vdc power supply for receiver and repeater	P01330427
ELOG DATA LOGGER - Data collection and recording	P01331233
E.ONLINE 3 - energy management software	EONLINE3-CFG
Radio Frequency Audit service	DOC PEE 1001



FRANCE
Enerdis
 16, rue Georges Besse - Silic 44
 92182 ANTONY Cedex
 Tel : +33 1 75 60 10 30
 Fax : +33 1 46 66 62 54
 info@enerdis.fr
 www.enerdis.fr

UNITED KINGDOM
Chauvin Arnoux Ltd
 Nelson Ct, Flagship Sq, Shaw Cross Business Pk
 Dewsbury, West Yorkshire - WF12 7TH
 Tel: +44 1924 460 494
 Fax: +44 1924 455 328
 info@chauvin-arnoux.co.uk
 www.chauvin-arnoux.com

MIDDLE EAST
Chauvin Arnoux Middle East
 P.O. BOX 60-154
 1241 2020 JAL EL DIB - LEBANON
 Tel: +961 1 890 425
 Fax: +961 1 890 424
 camie@chauvin-arnoux.com
 www.chauvin-arnoux.com

