

Message when switched on:

Quick COMMISSIONING Three-phase meter on current transformers (ULYS TTA)



Press the **SET** button for at least 3 seconds



Press



then to increment the digit



Confirm by



CT is the ratio of the primary to the secondary of the CT
Example: CT 100/5A => ratio Ct = 20

Go to the next parameter : **FSA**



Press



Then to change the digit

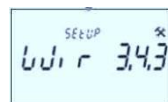


Confirm by



FSA is the secondary current of the CT
Example: CT 100/1A => FSA = 1

Go to the next parameter: **User** and continue to: **Wir**



Press



Then to change the value



Confirm by



3.3.2 three-phase, 3 wires, balanced, 2CT
3.3.3 three-phase, 3 wires, unbalanced, 3CT
3.4.3 three-phase, 4 wires unbalanced, 3CT



Press for at least 3 seconds



Press again to confirm